



# SHALIMAR®

## INNOVATION IN AGRICULTURE

P  
R  
E  
M  
I  
U  
M  
  
P  
R  
O  
D  
U  
C  
T  
S



**LENO BAGS**



**SHADE NET**



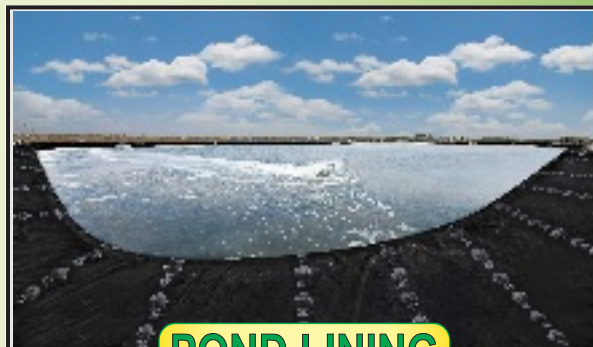
**MULCH FILM**



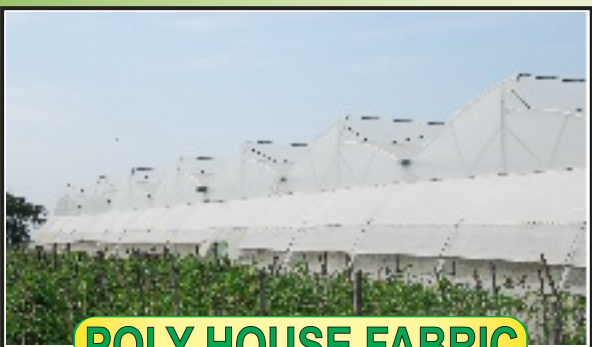
**GROUND COVER**



**TARPAULINS**



**POND LINING**



**POLY HOUSE FABRIC**

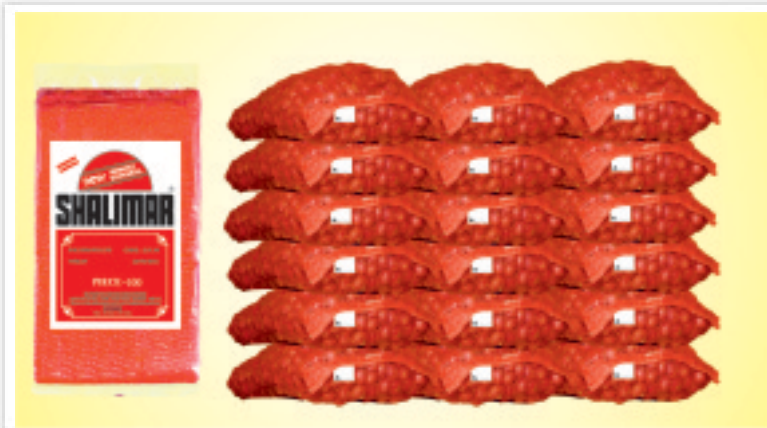


**STITCHING THREAD**

G  
U  
A  
R  
A  
N  
T  
E  
E  
D  
  
Q  
U  
A  
L  
I  
T  
Y

MANUFACTURED IN ISO 9001:2015 CERTIFIED FACILITY  
Visit us at [www.shalimarpack.com](http://www.shalimarpack.com) • Email: [sales@shalimarpack.com](mailto:sales@shalimarpack.com)  
Contact us: 9820367388 / 7506209096 / 9584333379

## LENO BAGS



Leno Bags from the house of Shalimar are highly preferred for their excellent quality, great value and long lasting properties. It is an ideal packaging solution for perishable products like potatoes, onions, garlic, coconuts, fruits & vegetables. It is also widely used for packing marine products.

Leno bags scores a definite edge over all other conventional modes of packaging perishable products. It is strong, light-weight and can withstand long hours of transportation without any wastage or spillage. It also provides excellent ventilation and is resistant to any fungus or insects thus preserving the life of the packed content.

## STITCHING THREAD (SUTALI)



Shalimar stitching thread (**Sutali**) is made from 100% Virgin & U.V. treated raw material. Our stitching thread in comparison to other traditional stitching threads is cheaper, stronger, durable. It is used in tying plants to support the plant from getting damaged and to prevent drooping. Widely used in Plants like tomatoes, Grapes, Oranges etc. It is also widely used for stitching various bags like Jute bags, Woven Bags, Cloth bags & Leno bags. It is very well suited for Agricultural use, Industrial packing and Tying of Mandap & Greenhouse. Our sutali is available in 80", 90" length as well as in various sizes as per requirement . We offer various colours of stitching thread like Red, White, Jute Brown, Green, Blue, etc. They come in a packing of 100 pieces and is easy to use.

## SHADE NET



Experience the power of shade with Shade nets from Shalimar which offer protection from sunlight and different harsh surrounding conditions. Made from Virgin HDPE and added UV stabilizers, these Shade nets are extremely durable and very long lasting. With multiple protective features Shalimar Shade nets find extensive usage in Agriculture, horticulture, floriculture, Construction sites and other general purpose shading. Also widely used for making pandals in parties and functions.

Our shade nets are offered in various sizes and colours from 1 mtr to 6.2 mtr and shade percentage available in 30%, 50%, 75%, 90% in Green, White, Black, Red and also multi colours as per requirement.

Multiple usage and advantages of shalimar shade Net:-

- Shalimar Shade net helps in protecting Agriculture, Horticulture, Floriculture and others from harmful ultraviolet rays.
- Our shade net is useful in preventing falling of wastage and debris from construction sites and construction of multi storey building.
- Widely used in Outdoor parties, Festivals, Making of pandals (Roof, Flooring, and Walls).
- Very useful in Poultry farms, Fish pond, Animal husbandry etc.
- Extensively used for drying Grapes, Onions, Groundnuts and other Oil seeds.
- Shalimar Shade nets are Economical, Reusable and easy to use.

## AGRO ROPE (BRAIDED)



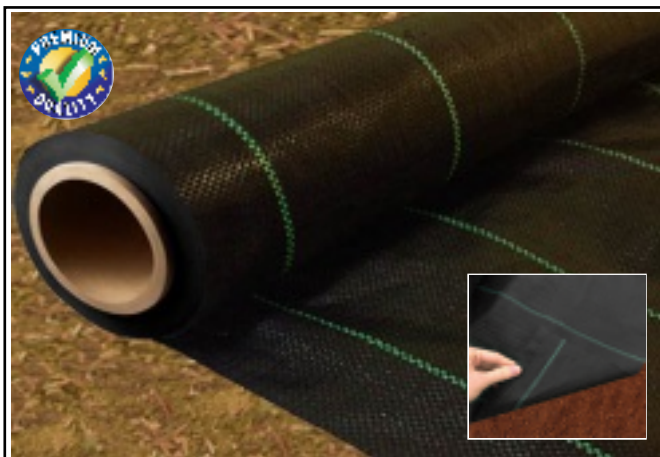
Shalimar braided agro rope is made from 100% virgin HDPE material and added anti sulphur UV stabilizers that makes it very strong and long lasting in agricultural use. Our agro rope is mainly used in tying Shadenet, Green house, Polyhouse, Mandap and other general applications. These agro ropes are available in various sizes & colours.

## POND LINING



- Highly effective and economic method of making artificial lakes in their desired area in no time. Full-proof solution with long lasting results.
- Shalimar pond lining is manufactured by using 100% virgin eco friendly material that is safe for environment
- Consist of UV resistance additives which help to resist the weathering effect due to ultraviolet exposures.
- Manufactured and customised as per the pond, these liners comes in big size panels which are then welded on the site to fit the pond correctly and line it from all the sides.
- These are highly durable & flexible liners easy to handle and low maintenance. Available in black colour made of 5 layers in two qualities 400 Micron and 500 Micron as per ISI standard.

## GROUND COVER / WEED MAT



These ground covers are made from virgin quality Polypropylene tapes weaved together to provide great strength and durability. UV stabilised to provide long life in direct heat and sunlight, suitable for greenhouses and outdoor fields. Precision construction of fabric ensures gap between the flat yarns for good water and air permeability. Controls soil erosion due to watering or rains and retains soil quality.

Environment friendly method of weed control without use of any chemicals in the soil. Available in various Sizes and Colour.

## TARPAULINS



One name that has gained wide popularity with total protection from rain is Shalimar Tarpaulin. Shalimar is the brand leader in HDPE tarpaulin and is the most wanted brand in India for domestic, commercial as well as industrial use. The very famous ad slogan of Shalimar Tarpaulin- "Baarish ki dhal, Shalimar Tirpal" sums it up for its durability, consistency and reliability.

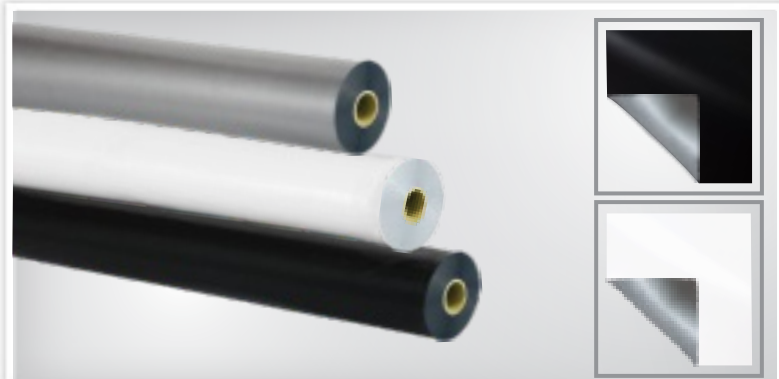
### Why Shalimar Tarpaulin?

It is 100% Waterproof and U/V resistant. It is long-lasting, sturdy & possesses super strength. It has rustproof aluminum grommets (eyelets) with sewn-in welding for extra strength. It can act as an all weather protection. It's light-weight and comes in various sizes and in designer colours (stripes, textures). It is available in different qualities (GSM). It comes in different types such as two sides laminated and sandwiched tarpaulin- for extra strength.

GSM		SIZES								
06 x 04	07 x 05	95	120	135	160	170	190	200	225	250
06 x 06	08 x 06	09 x 06	09 x 09	12 x 09	12 x 12	15 x 09	15 x 12	18 x 12		
18 x 15	21 x 15	21 x 18	24 x 12	24 x 15	24 x 16	24 x 18	24 x 21	27 x 16	27 x 18	27 x 21
27 x 24	30 x 18	30 x 20	30 x 21	30 x 24	30 x 27	30 x 30	36 x 30	40x30	40x40	60x40



## MULCH FILMS



Shalimar puts years of experience to work for agriculture by providing best quality multi layered mulch films. Mulching has become the core technology in vegetables, fruits, flowers and foodgrains production as the quality of the crop is far more superior and yield is faster.

Our mulch films are easy to apply and have the strength and stretch to ensure a tight fit over raised beds.

Mulching is the process of covering the soil/ground to make more favourable conditions for plant growth, development and efficient crop production.

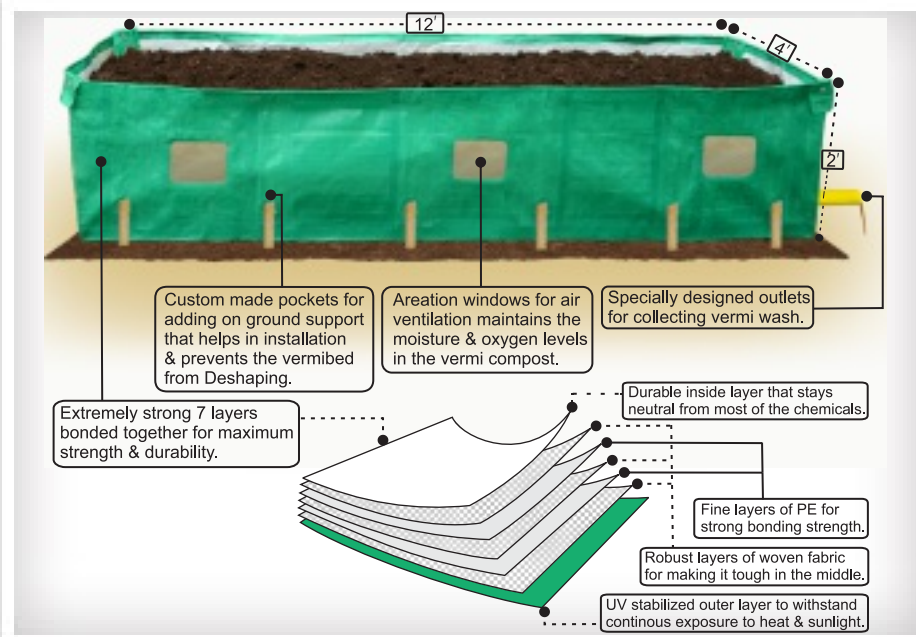
## POLY HOUSE FABRIC



Shalimar brings forth Polyhouse woven fabric that is made of PP/HDPE virgin raw material. These fabrics are widely used in polyhouses all across the globe as protective covering and to have a controlled environment through out the year to grow all types of vegetables, fruits and flowers of consistent good quality which in turn leads to the higher returns for the farmers.

Our fabric consists of three layers, the finely woven middle layer is laminated on both the sides with best virgin grade material and the added UV stabilizer makes the fabric strong and well equipped to sustain constant heat and sun light for longer durations. These fabrics transfer diffused sunlight and have the properties like anti-drip, anti-fog and anti-dust that are favourable for the uniform and better quality growth of crop throughout the year.

## VERMI BED



Vermi Beds from the house of Shalimar is a great innovation and is widely used for organic farming. The vermi compost made from our Vermi Bed makes the soil & crop completely free from chemicals and other harmful substances as compared to chemical fertilizers. It also enriches the soil and improves its fertility giving the farmer better yield of crop in a very eco friendly way.

Our Vermi Bed is made of seven layers bonded together, its light in weight hence very easy to install but at the same time its strong and durable.

## RAIN PONCHO



Travelling



Farming



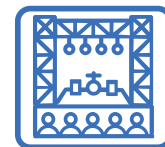
Biking



Outdoor



Camping



Festival /  
Concerts



Barish ki Dhaal  
Shalimar Tirpal !!

**NEW**

# SHALIMAR®



## CROSS LAMINATED TARPAULIN



Warehouses / Godowns



Trucks / Tempos



Building Construction Coverage



Tents / Huts

**COMPLETE**  **PROTECTION**

Made of best quality and virgin material

Strong, durable and long lasting quality

Added UV stabilisers giving full protection from heat, rain and sunlight

Reinforced Seam and double ultrasonically reinforced eyelet on all sides

100% recyclable and environment friendly



**SHALIMAR GROUP**

Regd. Office: R-504, TTC Industrial Area, MIDC Thane Belapur Road, Rabale, Navi Mumbai - 400 701.  
Fax No.: 022-24980900 • Email: mail@shalimarpack.com • Web: www.shalimarpack.com / www.crosslaminated.in